

.100" (2.54 MM) CONTACT SPACING
2 ROWS OFFSET .050" (1.27MM)

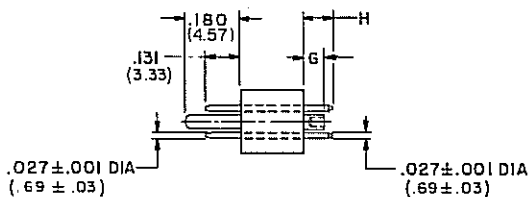
9,17,25,33,41,77 CONTACTS

ST600-1, LPST600-1

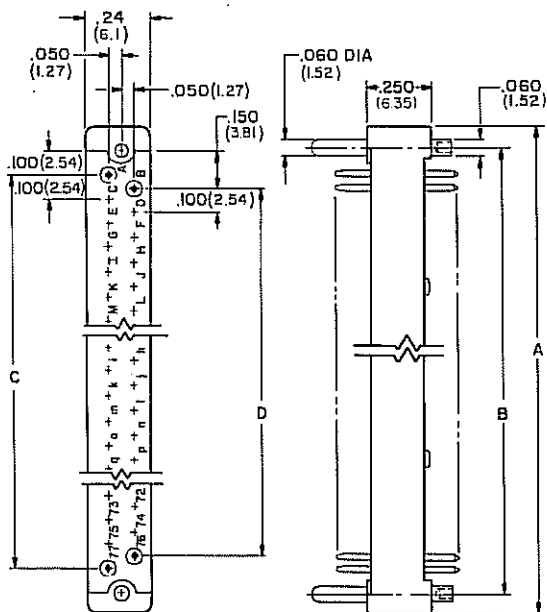
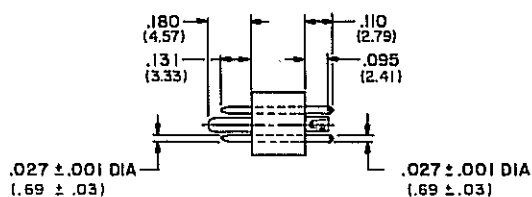
MIL-C-55302/5

PRINTED CIRCUIT PIN CONNECTORS

MIL-C-55302/5



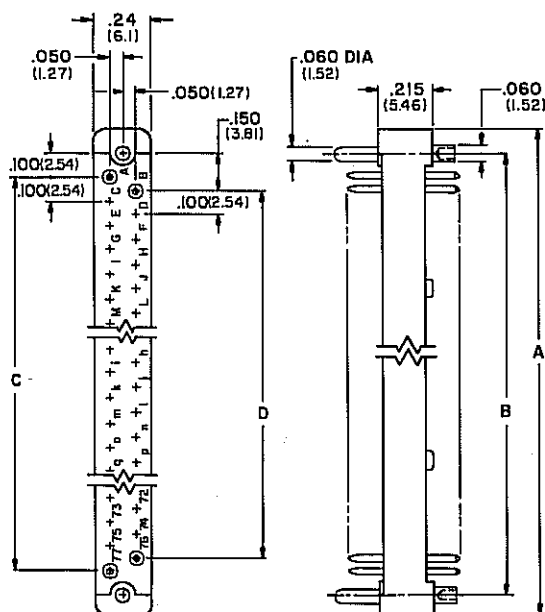
LOW PROFILE



Straight-Thru Pins

PART NO.		G	H
ST600-1-	P	.090 (2.29)	.110 (2.79)
ST600-1-	P1	.128 (3.25)	.164 (4.17)
ST600-1-	P2	.090 (2.29)	.164 (4.14)

↑ Insert number of contacts
(9, 17, 25, 33, 41, 77)



Straight-Thru Pins

LPST600-1-()P

↑ Insert number of contacts
(9, 17, 25, 33, 41, 77)

NO. OF CONTACTS	DIMENSIONS			
	A	B	C	D
9	.75 (19.1)	.600 (15.24)	.400 (10.16)	.300 (7.62)
17	1.15 (29.2)	1.000 (25.40)	.800 (20.32)	.700 (17.78)
25	1.55 (39.4)	1.400 (35.56)	1.200 (30.48)	1.100 (27.94)
33	1.95 (49.5)	1.800 (45.72)	1.600 (40.64)	1.500 (38.10)
41	2.35 (59.7)	2.200 (55.88)	2.000 (50.80)	1.900 (48.26)
77	4.15 (105.4)	4.000 (101.60)	3.800 (96.52)	3.700 (93.98)

CROSS-REFERENCE

MIL P/N	CCC P/N
M55302/5-01	ST600-1-9P1
M55302/5-02	ST600-1-17P1
M55302/5-03	ST600-1-25P1
M55302/5-04	ST600-1-33P1
M55302/5-05	ST600-1-41P1
M55302/5-06	ST600-1-77P1

SPECIFICATIONS: Refer to page 9

MATING CONNECTORS: Series ST600-1 and LPST600-1 pin connectors mate with Series 600-1 socket connectors.