

.100" (2.54MM) CONTACT SPACING
3 ROWS OFFSET .050" (1.27MM)

92 CONTACTS

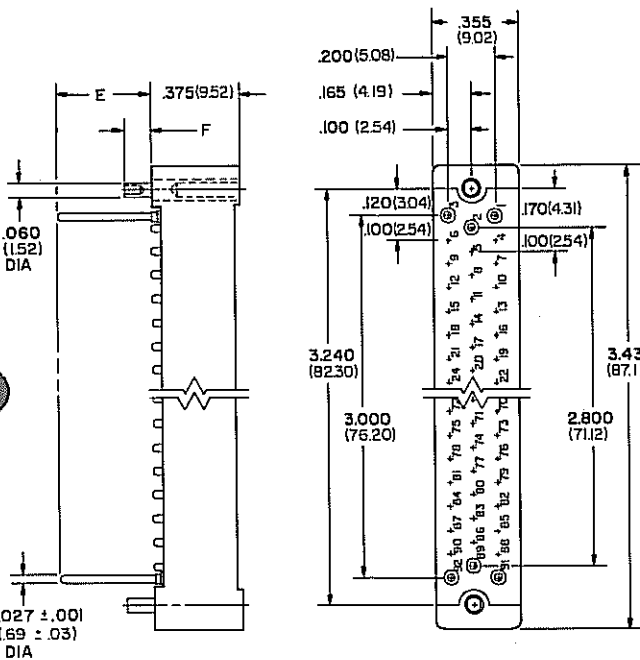
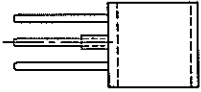
610-1

MIL-C-55302/21,22

PRINTED CIRCUIT PIN & SOCKET CONNECTORS

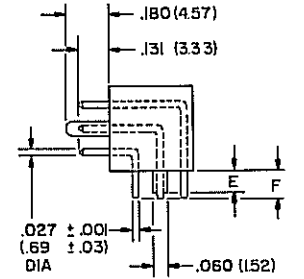
MIL-C-55302/22

MIL-C-55302/21

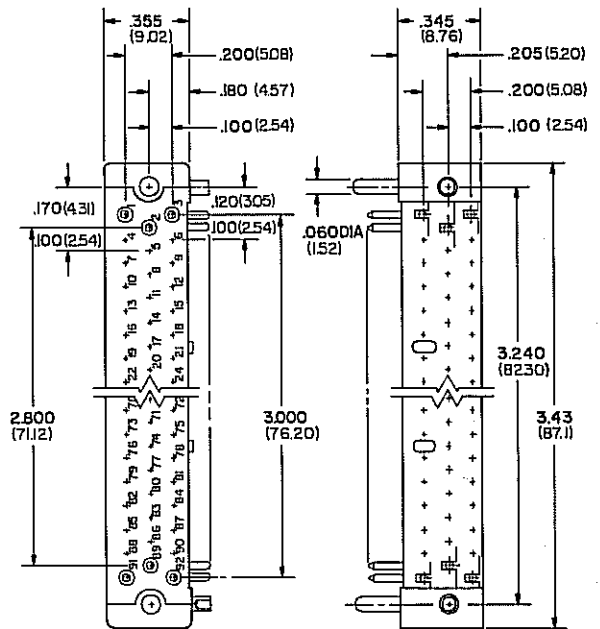


Straight-Thru Sockets

PART NO.	E	F
610-1-92 SD39	.390 (9.91)	.112 (2.84)
610-1-92 SD16	.158 (4.01)	.145 (3.68)
610-1-92 SD15	.145 (3.68)	.154 (3.91)



Right-Angle Pins



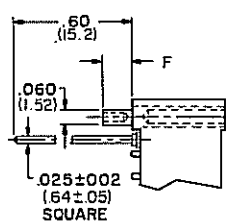
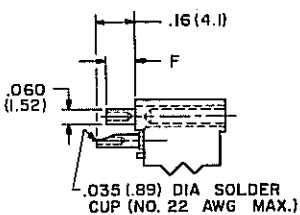
PART NO.	E	F
610-1-92P	.087 (2.21)	.092 (2.34)
610-1-92P1	.145 (3.68)	.154 (3.91)

ALTERNATE TERMINALS ON RECEPTACLES

CROSS-REFERENCE

Solder Cup

Wrapping



MIL P/N	CCC P/N
M55302/21-01	610-1-92P
M55302/21-02	610-1-92P1
M55302/22-01	610-1-92SD39
M55302/22-02	610-1-92SD16
M55302/22-03	610-1-92SD15

PART NO.	F	PART NO.	F
610-1-92 SC	.112 (2.84)	610-1-92 SW	.112 (2.84)
610-1-92 SC-1	.150 (3.81)	610-1-92 SW-1	.150 (3.81)

SPECIFICATIONS: Refer to page 9