

.100" (2.54 MM) CONTACT SPACING

FOR 1/16(1.6) PRINTED CIRCUIT BOARDS

12 THRU 100 CONTACTS

V6121-150

CARDEGE CONNECTORS

DUAL READOUT

Series V6121-150 is described more comprehensively in our "V6121-150" brochure

NO. OF CONTACTS	DIMENSIONS				
	A	B	C	D	E
6/6	.500 (12.70)	.707 (17.95)	.875 (22.22)	1.175 (29.94)	1.475 (37.46)
10/10	.900 (22.86)	1.107 (28.11)	1.275 (32.38)	1.575 (40.00)	1.875 (47.62)
12/12	1.100 (27.94)	1.307 (33.19)	1.475 (37.46)	1.775 (45.08)	2.075 (52.70)
15/15	1.400 (35.56)	1.607 (40.81)	1.775 (45.08)	2.075 (52.70)	2.375 (60.32)
18/18	1.700 (43.18)	1.907 (48.43)	2.075 (52.70)	2.375 (60.32)	2.675 (67.94)
19/19	1.800 (45.72)	2.007 (50.98)	2.175 (55.25)	2.475 (62.87)	2.775 (70.49)
20/20	1.800 (45.72)	2.107 (53.51)	2.275 (57.78)	2.575 (65.40)	2.875 (73.02)
22/22	2.100 (53.34)	2.307 (58.59)	2.475 (62.86)	2.775 (70.48)	3.075 (78.10)
25/25	2.400 (60.96)	2.607 (66.21)	2.775 (70.48)	3.075 (78.10)	3.375 (85.72)
26/26	2.500 (63.50)	2.707 (68.76)	2.875 (73.02)	3.175 (80.65)	3.475 (88.27)
28/28	2.700 (68.58)	2.907 (73.83)	3.075 (78.10)	3.375 (85.72)	3.675 (93.34)
30/30	2.900 (73.66)	3.107 (78.91)	3.275 (83.18)	3.575 (90.81)	3.875 (98.42)
31/31	3.000 (76.20)	3.207 (81.45)	3.375 (85.72)	3.675 (93.34)	3.975 (100.96)
35/35	3.400 (86.36)	3.607 (91.61)	3.775 (95.88)	4.075 (103.50)	4.375 (111.12)
38/38	3.500 (88.90)	3.707 (94.15)	3.875 (98.42)	4.175 (106.04)	4.475 (113.66)
40/40	3.900 (99.08)	4.107 (104.31)	4.275 (108.58)	4.575 (116.20)	4.875 (123.82)
43/43	4.200 (106.68)	4.407 (111.93)	4.575 (116.20)	4.875 (123.82)	5.175 (131.44)
44/44	4.300 (109.22)	4.507 (114.47)	4.675 (118.74)	4.975 (126.36)	5.275 (133.98)
50/50	4.900 (124.46)	5.107 (129.71)	5.275 (133.98)	5.575 (141.60)	5.875 (148.22)

MATERIALS AND FINISHES

Molded inserts: Phenolic molding compound, per MIL-M-14, type MFH.

Optional material: Diallyl phthalate, per MIL-M-14, type GDI-30F

Contacts: Beryllium copper, per QQ-C-533.

Contact finishes: Gold plate, per MIL-G-45204. Thicknesses:

0.000015" (0.4 micron).

30 - 0.000030" (0.8 micron) - Class 0.

50 - 0.000050" (1.3 microns) - Class 1. (MIL-SPEC approved)

Other finishes on request.

PERFORMANCE CHARACTERISTICS

Voltages, breakdown (volts rms, 60Hz):

At sea level: 2,000; At 70,000 feet: 500.

Voltages, test (volts rms, 60Hz):

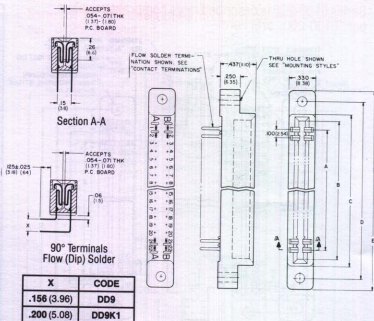
At sea level: 1,500; At 70,000 feet: 375.

Current rating: 3 amperes max. per contact.

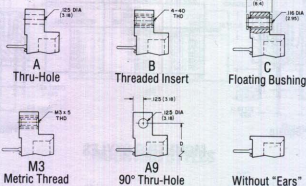
PART NUMBER NOMENCLATURE

1	2	3	4	5	6
V6121-150	- 72	DD13	A	-	30

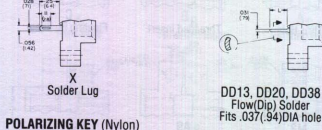
- Series: V6121-150.
- Number of contacts: 12 thru 100.
- Termination: X, DD13, DD20, DD38.
- Mounting style: A, B, C, M3, A9.
- (Without "ears" is otherwise supplied).
- Optional diallyl phthalate molding: GDF. (Phenolic is otherwise supplied).
- Optional gold thickness: 30, 50. (0.000015", 0.4 micron, is otherwise supplied).



MOUNTING STYLES



TERMINATIONS



POLARIZING KEY (Nylon)



L	ORDERING CODE
.13 (3.3)	DD13
.20 (5.1)	DD20
.38 (9.7)	DD38