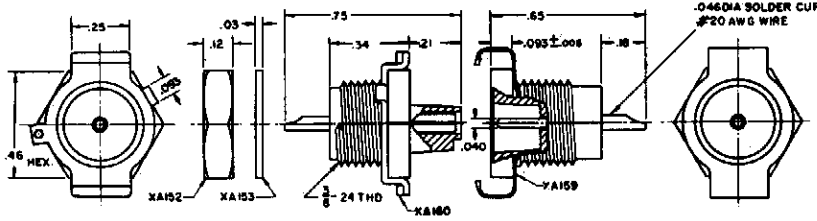
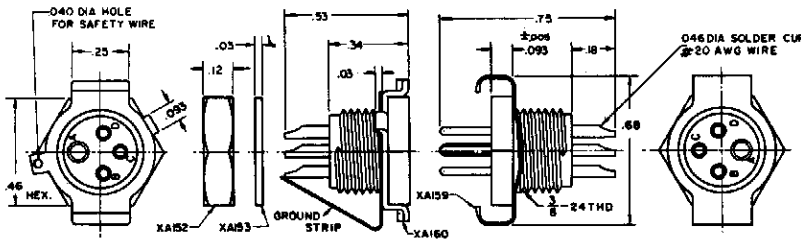


SERIES C-20 hexagonal

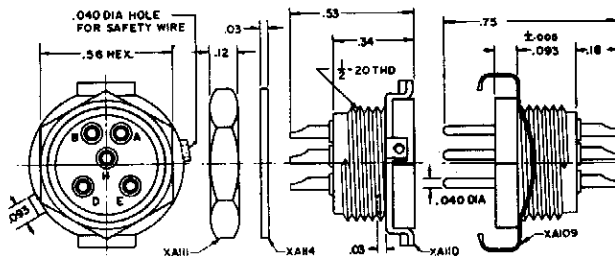
1, 4, 5, 7, 9, 10 CONTACTS



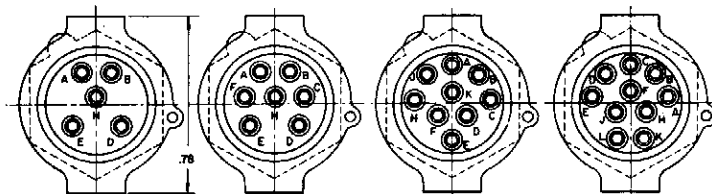
C1 - 20SVRN NUT LOCKWASHER RECEPTACLE WITH VIBRATION RING & NUT
C1 - 20SVRN
C1 - 20PVS PLUG W/VIBRATION SPRING
C1 - 20PVS



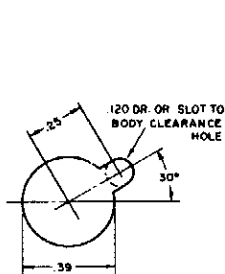
C4 - 20SVRN NUT LOCKWASHER RECEPTACLE WITH VIBRATION RING & NUT
C4 - 20SVRN
C4 - 20PVS PLUG W/VIBRATION SPRING
C4 - 20PVS



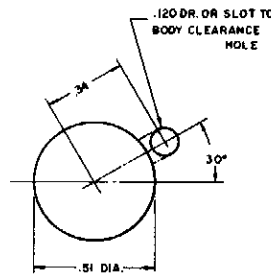
C5 - 20SVRN NUT LOCKWASHER RECEPTACLE WITH VIBRATION RING & NUT
C5 - 20SVRN
C5 - 20PVS PLUG W/VIBRATION SPRING
C5 - 20PVS



C5 - 20PVS **C7 - 20PVS** **C9 - 20PVS** **C10 - 20PVS**



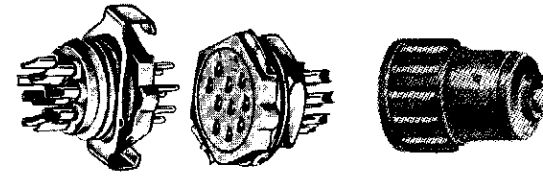
C1 - 20 & C4 - 20



C5 - 20 TO C10 - 20

PANEL MOUNTING HOLE LAYOUTS

SEE PAGE 36 FOR HEXAGONAL HOODS



C10 - 20PVS **C10 - 20SVRN** **C38 MOLDED HOOD**

ACTUAL SIZE

Hexagonal miniature connectors are a natural choice for small portable field equipment, aircraft and instruments that require fast, easy disconnect combined with safety provisions against disconnect under stress or shock. Mating boxes and one way contact arrangements eliminate possibility of incorrect engagement. Vibration spring with matching detent action locking, clamps and locks plug and socket against accidental separation.

ELECTRICAL AND MECHANICAL RATINGS

Voltage Rating:	Breakdown	Recommended
	Contact-to-Contact	Test
At Sea Level	2150V. RMS	1425V. RMS
At 30,000 Ft.	600V. RMS	400V. RMS
Current Rating:		
3 Amps. Continuous		7.5 Amps. Max.
Minimum Crimping Depth Between Contacts		.107"
Minimum Air Space Between Contacts		.127"
Contact, Center-to-Center		.125"
Solder Cup		#20 AWG Wire

C1-20 VOLTAGE APPROXIMATELY 25% LOWER

CONTINENTAL CONNECTORS