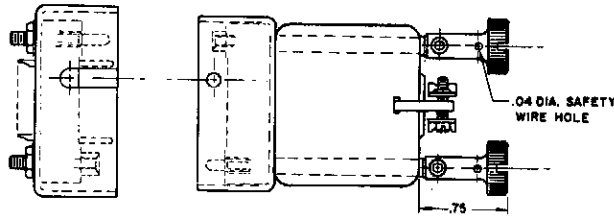
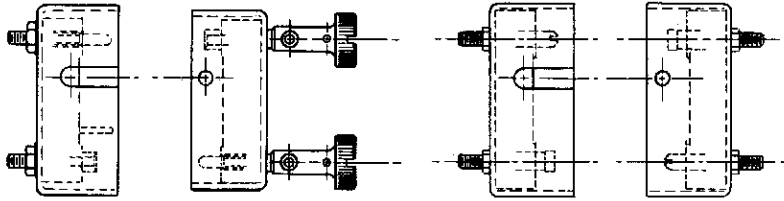


TYPICAL ASSEMBLIES



9 - 20PSP
TYPE "P" SHELL

9 - 20SK7HC
TYPE "C" SHELL



9 - 20PSP
TYPE "P" SHELL

9 - 20SK7C
TYPE "C" SHELL

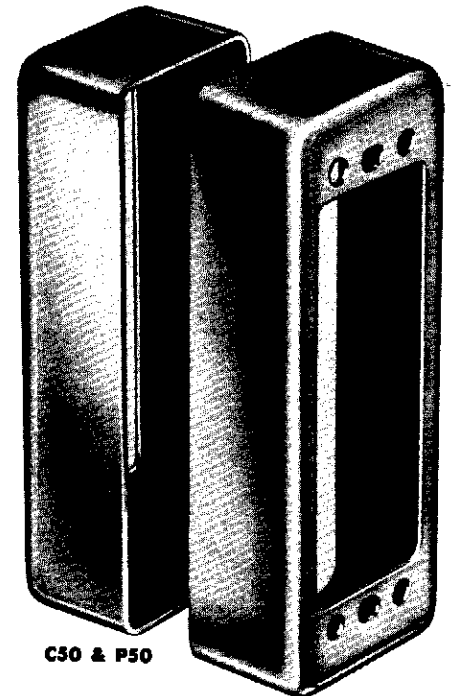
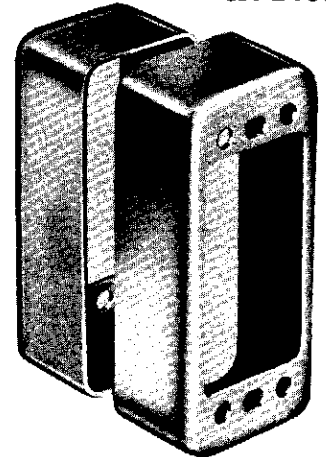
9 - 20PP
TYPE "P" SHELL

9 - 20SC
TYPE "C" SHELL

SERIES 20 protective shells

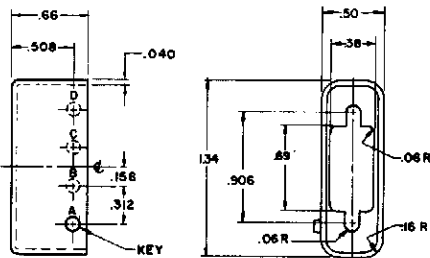
IN ANODIZED ALUMINUM

C34 & P34



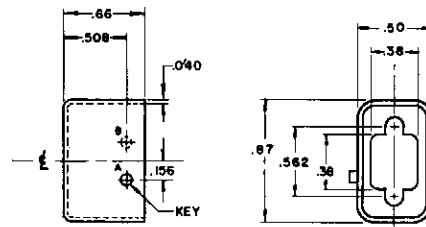
C50 & P50

ACTUAL SIZE



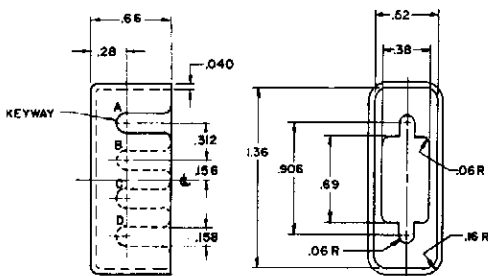
TYPE "C"
CABLE MOUNTING

C7



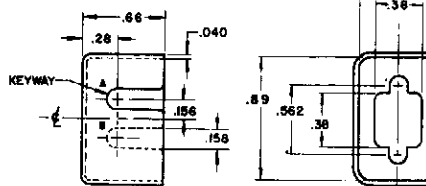
TYPE "C"
CABLE MOUNTING
(FOR C8 & C11 ONLY)

C8



TYPE "P"
PANEL MOUNTING

P7



TYPE "P"
PANEL MOUNTING
(FOR P8 & P11 ONLY)

P8

NOTES

1. Numerical designations in each title refer to quantity of contacts. IC20 and P20 are used with 20-contact shell.
2. Designate distribution at A, B, C or D, if required. IC14-P0, A, P14 for A.

CONTINENTAL CONNECTORS