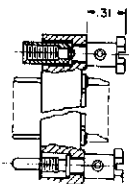


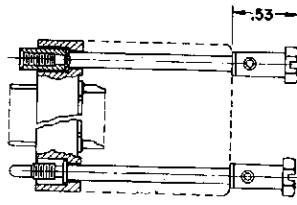
SERIES 20 polarizing screwlocks

HARDWARE IN MOLDINGS



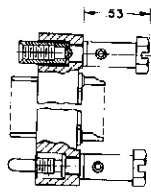
- - 20PSK5
- - 20SSK5

FIG. 1



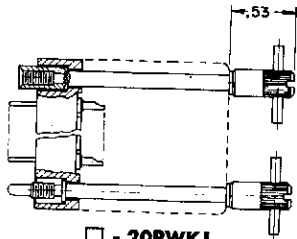
- - 20PWK
- - 20SWK

FIG. 4



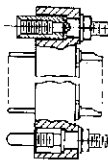
- - 20PSK
- - 20SSK

FIG. 2



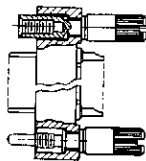
- - 20PSKJ
- - 20SWKJ

FIG. 5



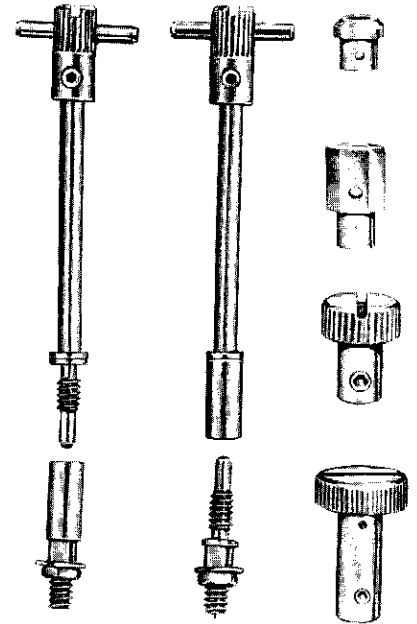
- - 20PS
- - 20SS

FIG. 3



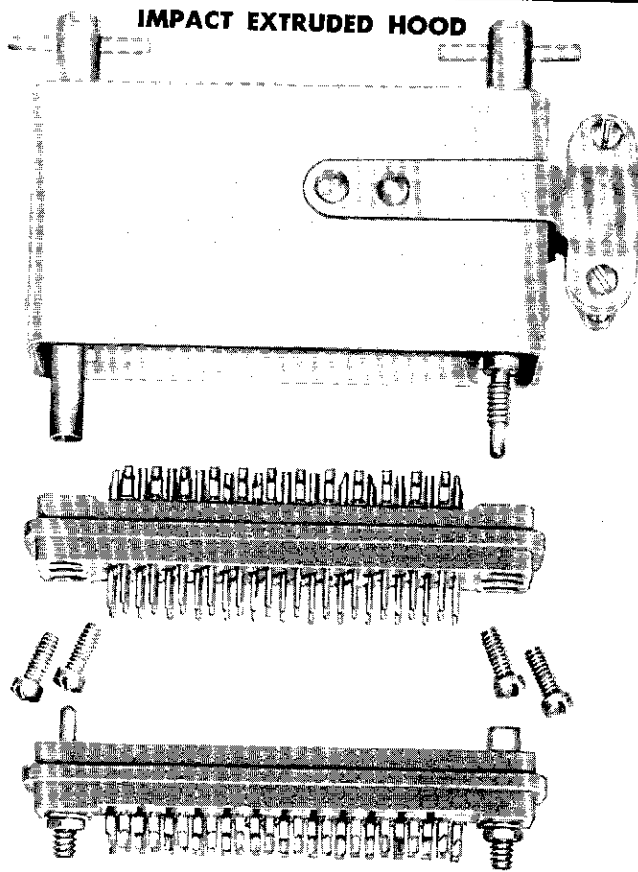
- - 20PSKJ
- - 20SSKJ

FIG. 6



ACTUAL SIZE

IMPACT EXTRUDED HOOD



"T" BAR SUPPLIED WHERE CABLE CLAMP IS CLEARED. ADDITIONAL KNOBS NOT SHOWN HERE ALSO AVAILABLE. CONTACT ENGINEERING DEPARTMENT FOR YOUR SPECIAL REQUIREMENTS.

SEE OUTLINE
DRAWING
ON PAGE 22

NOTES

FIG. 1 — Screwlocks (.31" Knob, Cable Mounted).

FIG. 2 — Screwlocks (.53" Knob, Cable Mounted).

FIG. 3 — Screwlocks, Panel Mounted.

FIG. 4 — Connector supplied with screwlocks for hood assembly. Hood not included but can be ordered separately.

FIG. 5 — Connector supplied with screwlocks and type "J" Knob for hood assembly. Hood not included but can be ordered separately.

FIG. 6 — Screwlocks (type "J" Knob, Cable Mounted).

CONTINENTAL CONNECTORS