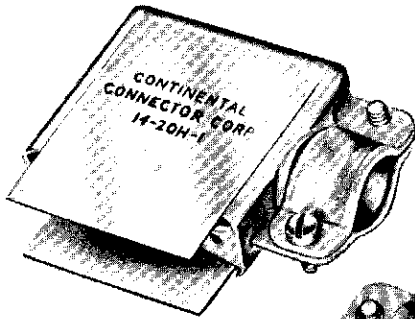


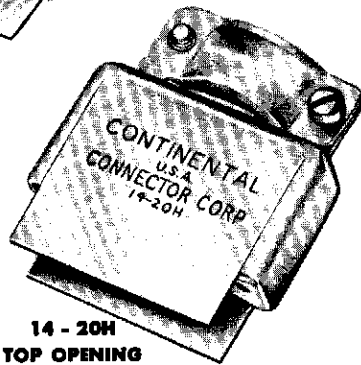
SERIES 20 aluminum hoods

FOR GUIDE PINS & GUIDE SOCKETS



14 - 20H - 1
SIDE OPENING

ACTUAL SIZE

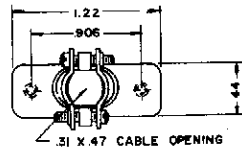


14 - 20H
TOP OPENING

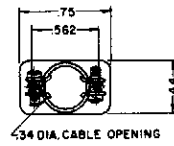
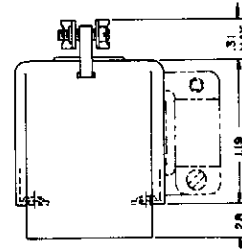
NOTES

1. Material: Aluminum alloy 525, QQ-A-318.
2. Finish: Anodized per QQ-M-151.
3. Designate side cable opening by adding suffix "H-1" to connector number (11-20H-1). For top cable opening add suffix "H" (11-20H).
4. Unless otherwise stated, side cable opening is the same as top opening.
5. Large cable opening is available where shown. Designate by adding H-2 to connector number (41-20H-2).

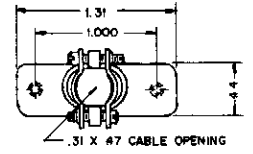
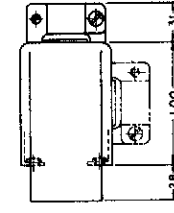
Design improvements have been incorporated in several types of hoods. These include drawn hoods with no seams such as 50-20KH8 outlined on page 22, and the split type which permits one side of hood to be removed for wiring inspection, outlined on page 13.



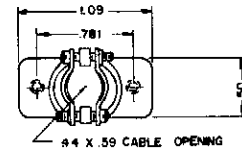
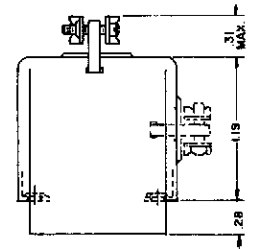
7 - 20H
7 - 20H - 1



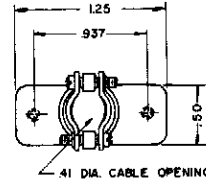
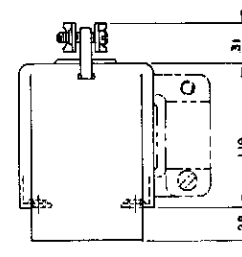
8 - 20H
8 - 20H - 1



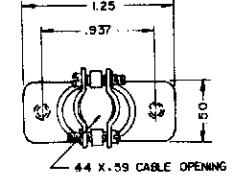
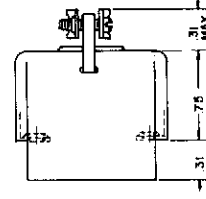
9 - 20H
9 - 20H - 1



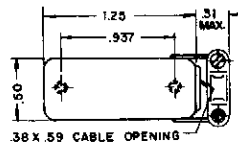
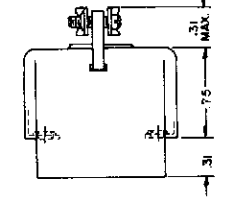
11 - 20H
11 - 20H - 1



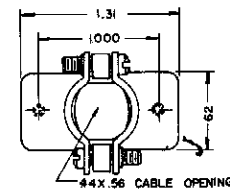
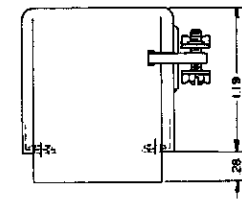
14 - 20H



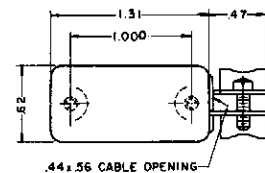
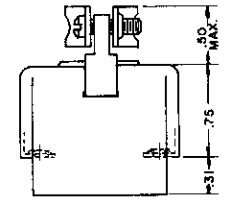
14 - 20H - 2



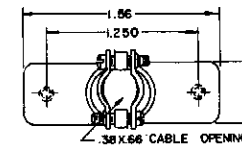
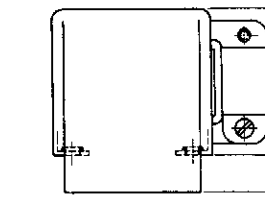
14 - 20H - 1



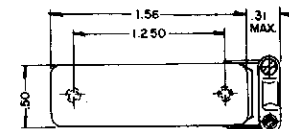
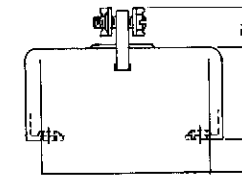
18 - 20H



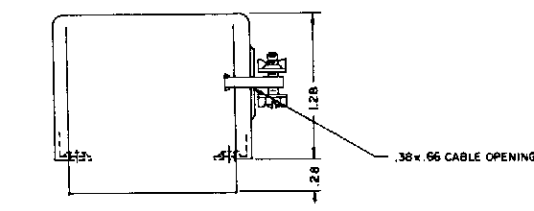
18 - 20H - 1



20 - 20H



20 - 20H - 1



SEE NEXT PAGE
FOR ADDITIONAL
HOOD DRAWINGS

CONTINENTAL CONNECTORS