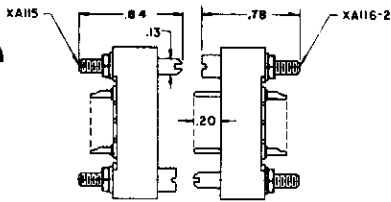
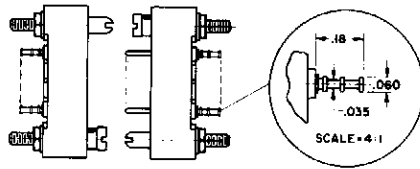


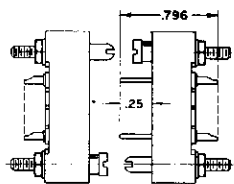
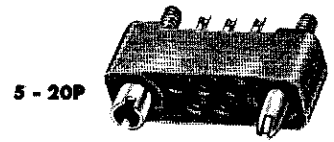
# TYPICAL ASSEMBLY OUTLINES



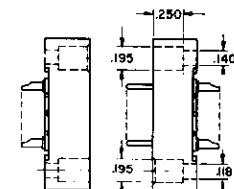
□ - 205 □ - 20P  
FIG. 1 & 11



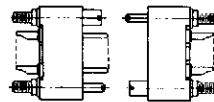
□ - 205T □ - 20PT  
FIG. 2



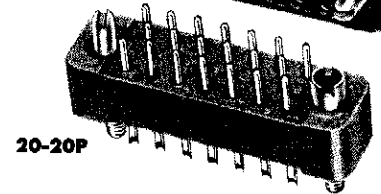
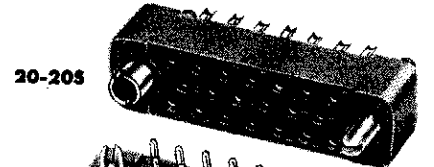
□ - 205 □ - 20P23  
FIG. 3



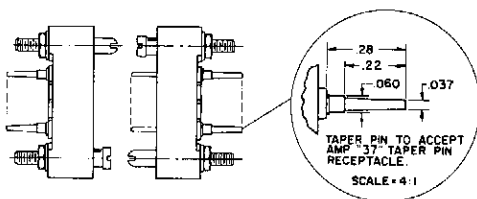
□ - 205W □ - 20PW  
FIG. 4



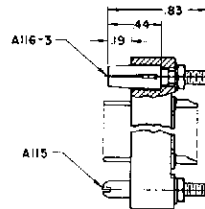
8 - 20S 8 - 20P  
FIG. 6



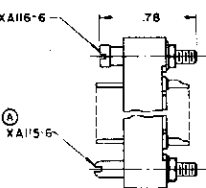
ACTUAL SIZE



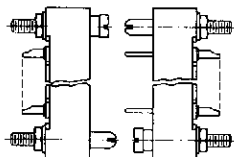
□ - 20S37 □ - 20P37  
FIG. 5



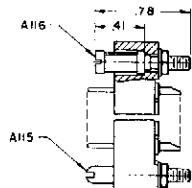
□ - 20PG  
□ - 20SG  
FIG. 7



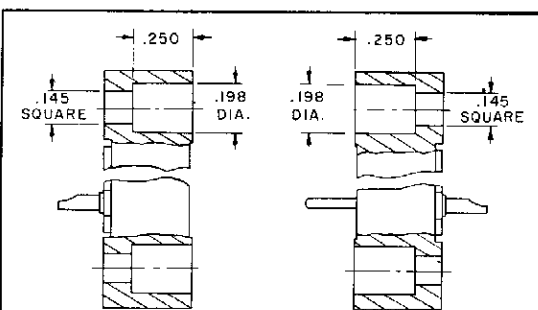
□ - 20PSS  
□ - 20SSS  
FIG. 10



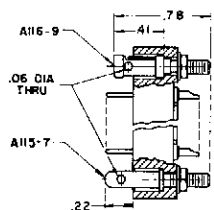
□ - 205XR □ - 20PXR  
FIG. 11 & 1



□ - 20PE  
□ - 20SE  
FIG. 8



□ - 20 SW □ - 20 PW  
TYPICAL ASSEMBLY WITHOUT HARDWARE



□ - 20PY  
□ - 20SY  
FIG. 9

## NOTES

- FIG. 1 — Connector supplied with standard guides (no grounding leaf).
- FIG. 2 — Connector supplied with turret terminals ("T").
- FIG. 3 — Connector supplied with extra long pin contacts ("23").
- FIG. 4 — Connector supplied without guides ("W").
- FIG. 5 — Connector supplied with taper contacts (to accept AMP "37" taper pin receptacles).
- FIG. 6 — Connector supplied only with guide pin and socket shown.
- FIG. 7 — Connector supplied with "G" guides for grounding.
- FIG. 8 — Connector supplied with leaf type guide sockets ("E").
- FIG. 9 — Connector supplied with hole in guide in place of screwdriver slot ("Y").
- FIG. 10 — Connector supplied with stainless steel guides ("SS").
- FIG. 11 — Connector supplied with reversed guides — guide pins and sockets interchanged ("R").

SEE PAGE 10 FOR DETAILS OF GUIDE PINS & SOCKETS